

# DROP-ON-BAR SLIDER BRACKET

**orbit**  
Orbit Industries, Inc.

**BARB Series**

**NEW**

**ORBIT INDUSTRIES  
EXCLUSIVE**

## THE MOST EFFICIENT WAY TO INSTALL BOXES ON BAR HANGERS

BARB

BARB-CS



A BARB and box assembly can be locked onto a BHA before arriving on the job site for quick adjustment in the field.

*The BARB Series allow 4" and 4-11/16" square boxes to be quickly dropped onto Orbit's Adjustable Bar Hangers (BHA) and then repositioned, even after the hangers are installed.*

- » Quickly attaches to any 4" or 4-11/16" square box with just one tek screw
- » Easily drops onto an Orbit BHA-16 & BHA-24 Adjustable Bar Hanger
- » Allows for the installation of up to 2 boxes between 16" studs and 4 between 24" studs
- » The BARB-CS comes complete with cable support pin holes

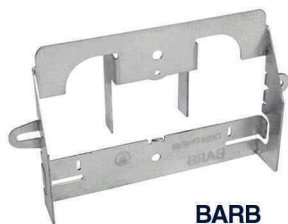


**PATENT PENDING**

# DROP-ON-BAR SLIDER BRACKET



**PATENT PENDING**



**BARB**



**BARB-CS**



**BHA-16**

**BHA-24**

**Preassembled**

**-OR-**

**In-Field**

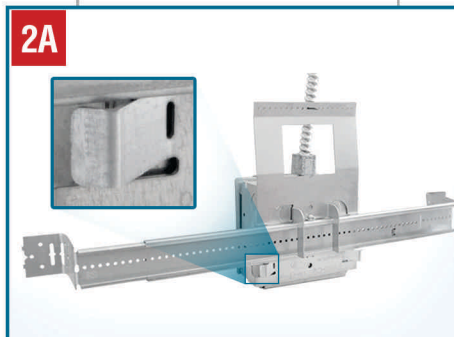
**1**

**Box Holder  
Tip!**



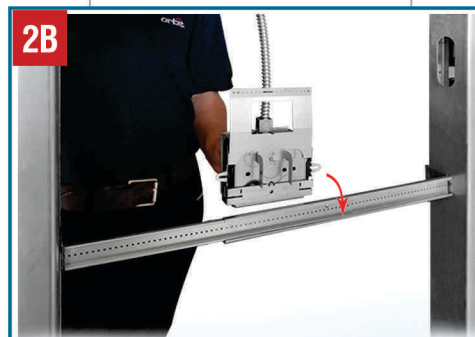
Attach to a 4" or 4-11/16" box with a single tek screw, forming a versatile box assembly

**2A**



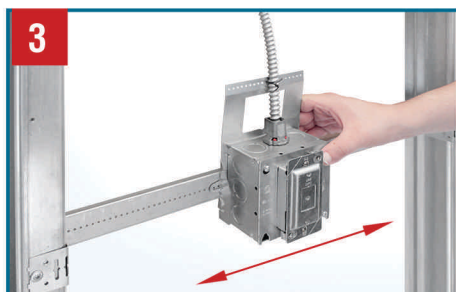
Box assemblies can be prefabricated onto a BHA before arriving to the job site, locking onto the hanger via its bendable tabs

**2B**



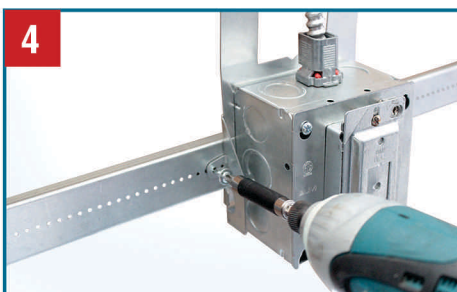
For In-Field installations, simply drop the box assembly onto a BHA before or after the hanger has been installed

**3**



Once the BHA is installed on studs, the box assembly can be adjusted along the hanger

**4**



Secure the assembly to the BHA with tek screws, setting the box in place



Multiple box assemblies can be easily added! **Up to 4 between 24" studs**

Cat. No.	Description	Std. Pkg.
<b>BARB</b>	Drop-On-Bar Slider Bracket	50
<b>BARB-CS</b>	Drop-On-Bar Slider Bracket with Cable Support Pin Holes	50
<b>BHA-16</b>	Up to 18" Adj. Box Bracket. Used with 1-1/2", 2-1/8" or 2-1/2" Deep Boxes	50
<b>BHA-24</b>	Up to 26" Adj. Box Bracket. Used with 1-1/2", 2-1/8" or 2-1/2" Deep Boxes	50